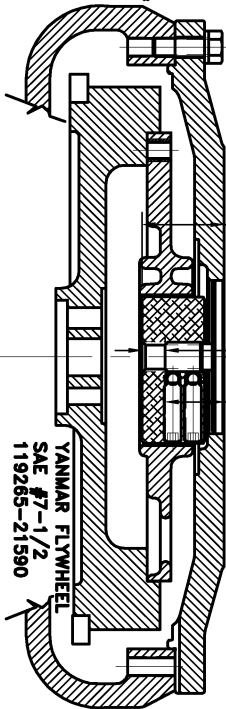


# YANMAR 3TNE 7 1/2 / 5 COMBO

YANMAR HOUSING  
171301-01600  
SEMI- SAE #5



S.A.E. A  
9 TOOTH  
16/32 D.P.  
30° P.A.  
.625 MAJOR

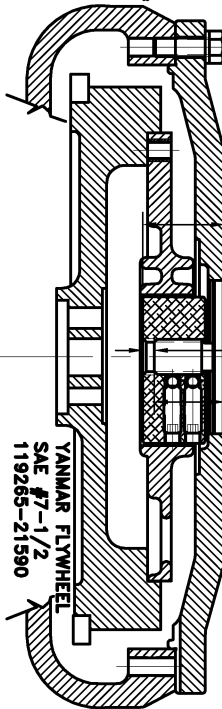
1.738  
INSTALLED  
HUB LENGTH

.488 HUB  
PRE-SET

1.250 SHAFT  
LENGTH

SAE #7-1/2  
119265-21590  
YANMAR FLYWHEEL

YANMAR HOUSING  
171301-01600  
SEMI- SAE #5



S.A.E. AA  
11 TOOTH  
16/32 D.P.  
30° P.A.  
.750 MAJOR

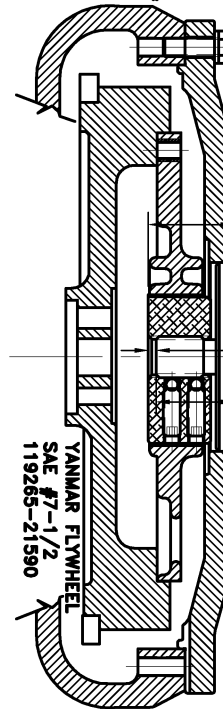
1.738  
INSTALLED  
HUB LENGTH

.248 HUB  
PRE-SET

1.490 SHAFT  
LENGTH

SAE #7-1/2  
119265-21590  
YANMAR FLYWHEEL

YANMAR HOUSING  
171301-01600  
SEMI- SAE #5



S.A.E. B  
13 TOOTH  
16/32 D.P.  
30° P.A.  
.875 MAJOR

1.820  
INSTALLED  
HUB LENGTH

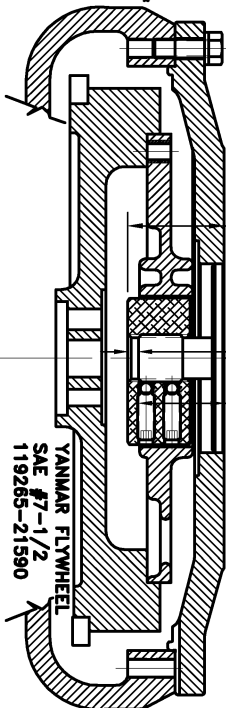
.170 HUB  
PRE-SET

1.650 SHAFT  
LENGTH

SAE #7-1/2  
119265-21590  
YANMAR FLYWHEEL

**SET SCREW TORQUE: 25 FT.LBS.**

YANMAR HOUSING  
171301-01600  
SEMI- SAE #5



S.A.E. BB  
15 TOOTH  
16/32 D.P.  
30° P.A.  
1.00 MAJOR

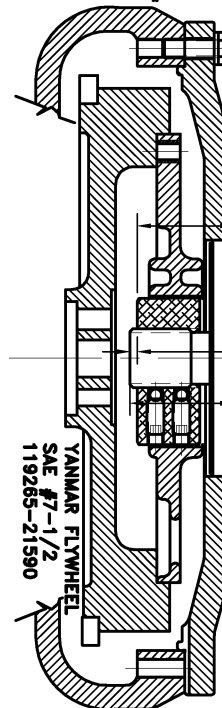
2.042  
INSTALLED  
HUB LENGTH

.227 HUB  
PRE-SET

1.815 SHAFT  
LENGTH

SAE #7-1/2  
119265-21590  
YANMAR FLYWHEEL

YANMAR HOUSING  
171301-01600  
SEMI- SAE #5



S.A.E. C  
14 TOOTH  
12/24 D.P.  
30° P.A.  
1.25 MAJOR

2.042  
INSTALLED  
HUB LENGTH

.158 HUB  
PRE-SET

2.200 SHAFT  
LENGTH

SAE #7-1/2  
119265-21590  
YANMAR FLYWHEEL

**NOTE:**  
THE SAE BB AND C  
ASSEMBLIES THE HUB  
IS INSTALLED  
REVERSED. LETTERING  
(HC\_) IS TOWARD  
PUMP.

**IMPORTANT INSTALLATION NOTE!!!!**

THIS PRINT IS FOR LOCATION OF HUB ON SPLINED SHAFTS ONLY. IMPROPER INSTALLATION OF HUB COULD CAUSE PREMATURE WEAR AND OR FAILURE. IF YOU HAVE A SHAFT LENGTH OTHER THAN THOSE SHOWN HERE PLEASE CONTACT DISTRIBUTOR OR FACTORY FOR FURTHER INFORMATION. HUB SET SCREWS MUST BE PROPERLY TORQUED TO 20 FT.LBS. EACH. PLEASE CONTACT DISTRIBUTOR OR FACTORY FOR ANY FURTHER QUESTIONS.

THIS DRAWING IS THE PROPERTY OF HAYES MFG. INC. AND IS LOANED SUBJECT TO THE CONDITION THAT IT SHALL NOT BE REPRODUCED, COPIED, LOANED OR OTHERWISE DISPOSED OF, DIRECTLY OR INDIRECTLY. IT SHALL BE USED AS A MEANS OF REFERENCE TO WORK FURNISHED BY THIS COMPANY ONLY AND IS NOT TO BE SUBMITTED TO OUTSIDE PARTIES FOR EXAMINATION WITHOUT OUR CONSENT.

SYMBOLS	DET.	PART NUMBER	DESCRIPTION	QTY.
▭ FLATNESS ▭ STRAIGHTNESS ▭ ANGULARITY ▭ SQUARENESS ▭ PARALLELISM ▭ CONCENTRICITY ⊕ TRUE POSITION ○ ROUNDNESS ⊖ CIRCULAR RUN OUT ⊖ TOTAL RUN OUT ▭ CYLINDRICITY ▭ FINISH	DO NOT SCALE DRAWING TOLERANCES UNLESS OTHERWISE SPECIFIED 1/32" MAXIMUM ANGLE ±1/2° FRACTION ±1/32 DECIMAL .00 ±.01 .000 ±.005 .0000 ±.0005			
			TITLE YANMAR 3TNE HUB PRE-SET PRINT	
			MATERIAL	
			DRAWN BY SIETING CHECKED BY RJH	DATE 11-16-05 SCALE
			DRAWING NO. HPS-15 SHEET OF REV.	
			- UNLESS OTHERWISE SPECIFIED - REMOVE FIRST THREAD ON ALL TAPPED HOLES BREAK ALL SHARP CORNERS .010 TO .020 STAMP OR MARK DRAWING NO.	